

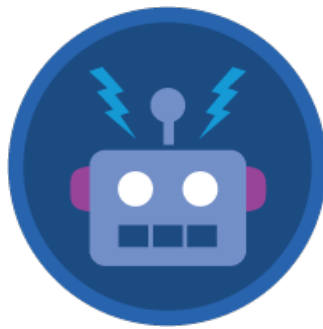
What is Process Builder Salesforce

Process Builder Salesforce is the advanced version of workflow rules which is simple and powerful. In this Salesforce tutorial, we will learn about different between Workflow, Visual Workflow and process builder Salesforce.

What is Process Builder Salesforce?

Process Builder Salesforce is the advanced version of workflow rules which is simple and has a powerful design. Process builder in Salesforce allows user to :

- Create your processes using a convenient layout with point-and-click efficiency.
- Create your whole process in one place rather than using multiple workflow rules.
- Create processes by collaborating with different teams in your business.
- Stop using Apex code to automate simple tasks.



Process Builder salesforce or Visual workflow tools allow users to create customized processes and wizard-like user experiences. Both tools offer a large selection of actions they can perform based on criteria defined by the user. Available actions can be extended by packages installed in the org. This provides another way in which you can expose your functionality for building customized scenarios. This approach does not require the user to write any code.

What is Workflow in Salesforce?

Workflow in Salesforce enables you to set up **workflow rules**. A workflow rule identifies what kinds of record changes or additions trigger specified workflow actions, such as sending **email alerts** and updating record fields. Workflow rules and actions are associated with a specific object (and can cross objects only to update fields on a related master record).

- Workflows are fast, easy and button-click friendly.
- Workflow rules will be triggered based on a set of criteria.

What is Visual Workflow in Salesforce?

Visual Workflow enables you to create flows, which are triggered by users rather than events. Unlike Workflow,

which always executes rules and actions behind the scenes, Visual Workflow offers screens for displaying and collecting information from the user running the flow.

- Flows aren't tied to any one object.
- They can look up, create, update, and delete records for multiple objects.

Home : Salesforce Admin Tutorials

↳ [Salesforce Administration](#)

Section 1 : Getting Started

↳ [What is Salesforce.com](#)

↳ [What is login.Salesforce.com](#)

↳ [Enabling Caching and Automcomplete at Salesforce login](#)

↳ [Overview of ERP and CRM](#)

↳ [What is Cloud Computing](#)

↳ [Why Salesforce CRM is #1 on Demand](#)

Section 2 : Designing your Data Model

Section 3 : Building your Data Model

↳ [Understanding Salesforce.com application](#)

↳ [How to create an App in SFDC?](#)

↳ [How to create custom object in SFDC](#)

↳ [Creating fields using different field types in Salesforce.com](#)

↳ [Overview on Salesforce Object Relationships](#)

↳ [How to create Master Detail relationship in SFDC?](#)

↳ [Cannot create Master Detail Relationship?](#)

↳ [How to create Lookup relationship in salesforce.com?](#)

↳ [How to create Many to Many Relationship in Salesforce?](#)

↳ [What is Schema Builder](#)

Section 4 : Implementing Business Logics

↳ [What is a Formula Filed?](#)

↳ [What are Cross Object Formulas?](#)

↳ [What are Validation Rules?](#)

↳ [Roll up Summary Fields](#)

↳ [Field Dependencies](#)

Section 5 : Setting up User Interface

‣ Page Types and Page Elements

‣ What are page Layouts?

‣ Home page layouts and components

‣ Why Documents are used in Salesforce

‣ List Views

Section 6 : Customizing Standard Salesforce Application

‣ How to Customise Standard Salesforce application

Section 7 : Salesforce Security Model

‣ Overview on Salesforce security Model

‣ How to create New Users in SFDC?

‣ What is SAML?

‣ Public groups in Salesforce

‣ Role Hierarchies in Salesforce.com

‣ How to create and manage Profiles

‣ What is Field Level Security?

‣ How to use Permission Sets?

‣ Control Record visibility using Organisation wide Defaults

‣ Control Record visibility using Role Hierarchy

‣ Control Record visibility using Sharing Rules

‣ What are Record Types and how can we configure

‣ What are Page Types and page Elements

Section 8 : Data Management

‣ Different Data Management Tools

‣ How to install Apex Data Loader in macOS and Windows

‣ How to Insert a record using Apex Data Loader

‣ How to Update and Insert records Apex Data Loader

‣ How to Delete and Export records Apex Data Loader

Section 9 : Salesforce.com Audit

‣ Field History Tracking

‣ Setup Audit Trail

Section 10 : Automate Business Process

‣ How to create New Email Template in Salesforce

‣ Salesforce Workflow Rules Overview

‣ Creating Workflow rules with Rule Criteria & Workflow actions

‣ Configuring Approval Process

‣ Assignment rules for Leads and Cases

Section 11 : Reports and Dashboards

‣ What is a report in Salesforce and how we create them?

‣ Salesforce Reports and Dashboards Overview

‣ How to use report builder?

‣ How to create Summary reports?

‣ How to create matrix reports?

‣ How to create salesforce Dashboard, Different Dashboard Components, Customizing Dashboard Components, How to create Dynamic Dashboard in Salesforce, Deleting and Printing Salesforce Dashboards

‣ Creating Dashboards with Dashboard Components for Tabular and Joined Reports

Section 12 : Salesforce Service Cloud

‣ Overview on Salesforce Service Cloud

Section 13 : Portal and Sites

Section 14 : AppExchange

‣ What is Salesforce AppExchange.

Section 15 : Managing Sandboxes

‣ What is Salesforce Sandbox?.

‣ Different Sandboxes and Sandbox Environment Types.

‣ How to create Salesforce Sandbox template?.

‣ How to create Salesforce Sandbox?

‣ How to login Salesforce Sandbox?

Section 16 : Salesforce lightning

‣ How to create Salesforce custom domain?

‣ What is Salesforce lightning Experience?

‣ What is Salesforce lightning component Framework?

‣ Creating first Salesforce lightning App

‣ Styling Salesforce lightning App

‣ Lightning Componnet : aura:attribute tag

‣ What is Salesforce DX?

‣ Create Salesforce DX project

‣ Salesforce Dev Hub Setup step-by-step

‣ Creating Sratch Org